

How to print from Xerox WorkCentre 7775 on Linux

1. Make sure you have sudoer privilege on your machine. Please email action@cs.stanford.edu if you are working on a machine managed by Computer Science Department.
2. Download the custom printer definition from <https://cs.stanford.edu/computing-guide/printing>
3. Using your favorite text editor, open the xr_WorkCentre7775.ppd, go to line 56 and it should read

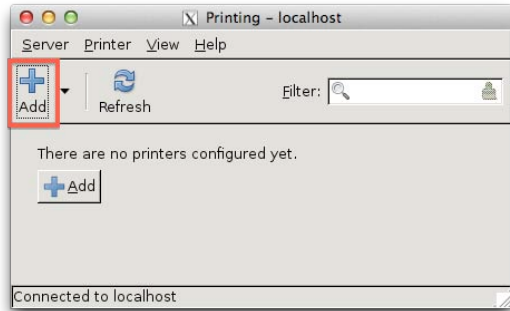
```
*JCLAccounting XSAGroup/XSA Group Based Accounting: "@PJL COMMENT  
OID_ATT_ACCOUNTING_INFORMATION_AVP <22>XRX_USERID,XXXXX<22>;<0A>@PJL COMMENT  
OID_ATT_ACCOUNTING_INFORMATION_AVP <22>XRX_GROUPACCT,1234<22>;<0A>"
```

4. Replace XXXXX with your copier code, save the file with the same name and quit your editor.
5. Install CUPS and system-config-printer from your linux package manager. (YUM, apt-get ... etc)

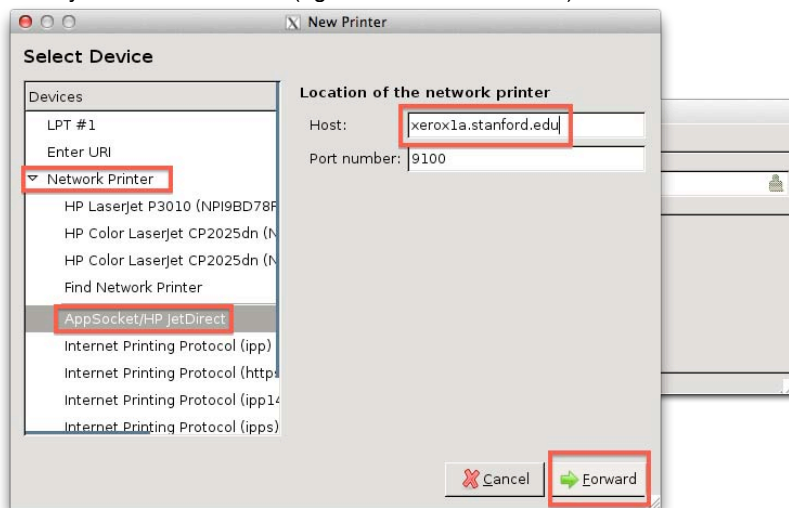
In Ubuntu: `sudo apt-get install cups system-config-printer`

In CentOS/Fedora: `sudo yum install cups system-config-printer`

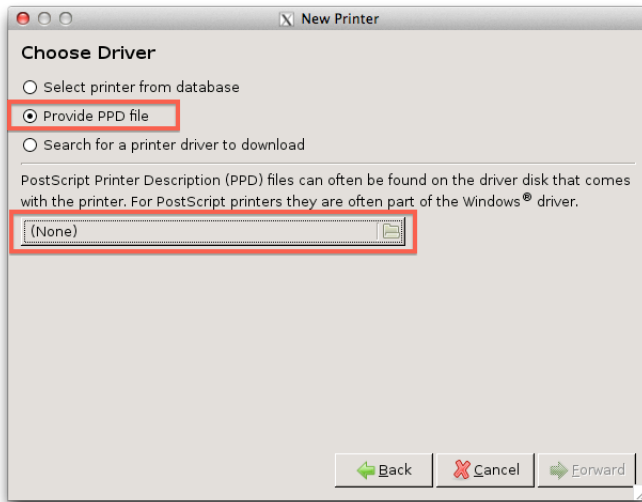
6. Type `sudo system-config-printer` in Terminal to launch the configuration window.



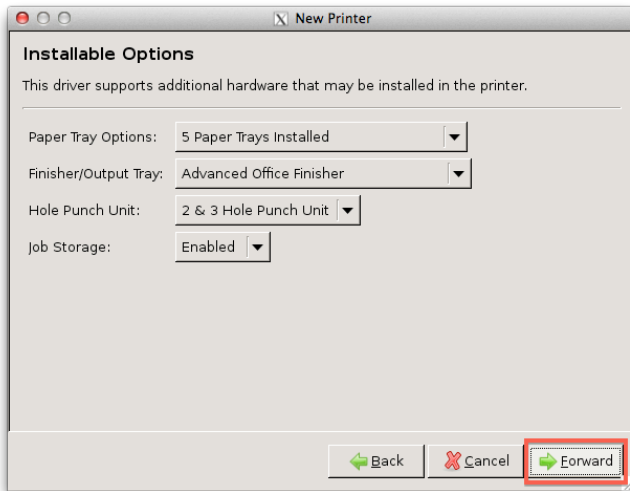
7. Click "New" or "Add" and select Network Printer > AppSocket/HP JetDirect. Type the full hostname of the printer you wish to connect. (eg. xerox1a.stanford.edu)



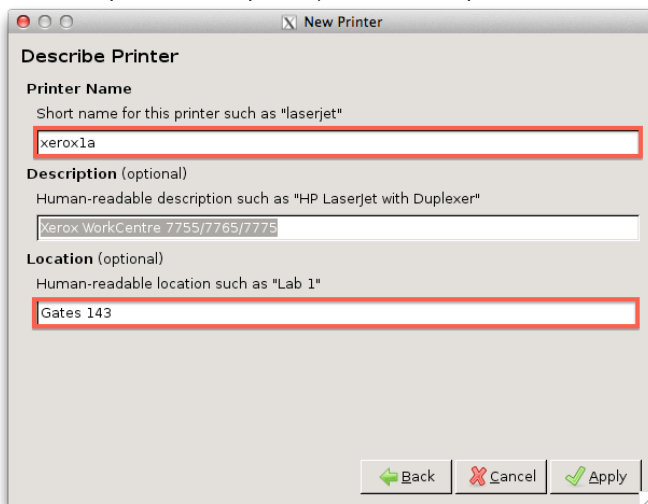
8. When prompted for Driver, select Provide PPD file, then select your modified version of xr_WorkCentre7775.ppd .



9. Click next to accept the installable options.



10. Fill out the printer description. (Name, Description and Location)



11. Print a test page when you finish.

